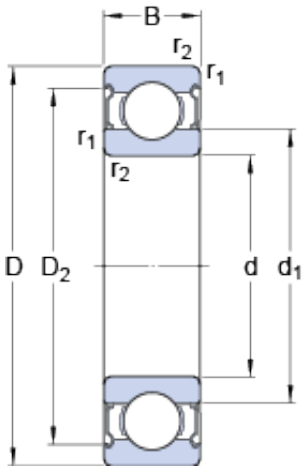




NUP BEARING LTD

4 mm x 9 mm x 4 mm skf 638/4-2Z Deep groove ball bearings

Bearing No. 638/4-2Z



638/4-2Z Bearing 2D drawings and 3D CAD models

Size	9x4x4 mm
Bore Diameter	9 mm
Outer Diameter	4 mm
Width	4 mm
d	4 mm
D	9 mm
B	4 mm
d ₁	5.2 mm
D ₂	8.1 mm
r _{1,2} - min.	0.1 mm
d _a - min.	4.6 mm
d _a - max.	5.1 mm
D _a - max.	8.4 mm
r _a - max.	0.1 mm
Basic dynamic load rating - C	0.54 kN
Basic static load rating - C ₀	0.18 kN
Fatigue load limit - P _u	0.07 kN
Reference speed	140000 r/min
Limiting speed	70000 r/min
Calculation factor - k _r	0.015
Calculation factor - f ₀	10
Size	9x4x4 mm
Bore Diameter	9 mm
Outer Diameter	4 mm



NUP BEARING LTD

Width	4 mm
d	4 mm
D	9 mm
B	4 mm
d ₁	5.2 mm
D ₂	8.1 mm
r _{1,2} - min.	0.1 mm
d _a - min.	4.6 mm
d _a - max.	5.1 mm
D _a - max.	8.4 mm
r _a - max.	0.1 mm
Basic dynamic load rating - C	0.54 kN
Basic static load rating - C ₀	0.18 kN
Fatigue load limit - P _u	0.07 kN
Reference speed	140000 r/min
Limiting speed	70000 r/min
Calculation factor - k _r	0.015
Calculation factor - f ₀	10
Category	Single Row Ball Bearings
Inventory	0.0
Manufacturer Name	SKF
Minimum Buy Quantity	N/A
Weight / Kilogram	0.001
EAN	7316570636048
Product Group	B00308
Enclosure	2 Metal Shields
Precision Class	ABEC 1 ISO P0
Maximum Capacity / Filling Slot	No
Rolling Element	Ball Bearing
Snap Ring	No



NUP BEARING LTD

Internal Special Features	No
Cage Material	Steel
Internal Clearance	C0-Medium
Inch - Metric	Metric
Long Description	4MM Bore; 9MM Outside Diameter; 4MM Outer Race Width; 2 Metal Shields; Ball Bearing; ABEC 1 ISO P0; No Filling Slot; No Snap Ring; No Internal Special Features; C0-Medium Internal Clearance; Steel C
Other Features	Deep Groove
Category	Single Row Ball Bearing
UNSPSC	31171504
Harmonized Tariff Code	8482.10.50.68
Noun	Bearing
Keyword String	Ball
Manufacturer URL	http://www.skf.com
Weight / LBS	0.0013
Bore	0.157 Inch 4 Millimeter
Outside Diameter	0.354 Inch 9 Millimeter
Inner Race Width	0 Inch 0 Millimeter
Outer Race Width	0.157 Inch 4 Millimeter
d_1	5.2 mm
D_2	8.1 mm
$r_{1,2}$ min.	0.1 mm
d_a min.	4.6 mm
d_a max.	5.1 mm
D_a max.	8.4 mm
r_a max.	0.1 mm
Basic dynamic load rating C	0.423 kN
Basic static load rating C_0	0.116 kN
Fatigue load limit P_u	0.005 kN



NUP BEARING LTD

Calculation factor k_r	0.015
Calculation factor f_0	6.5
Mass bearing	0.0013 kg